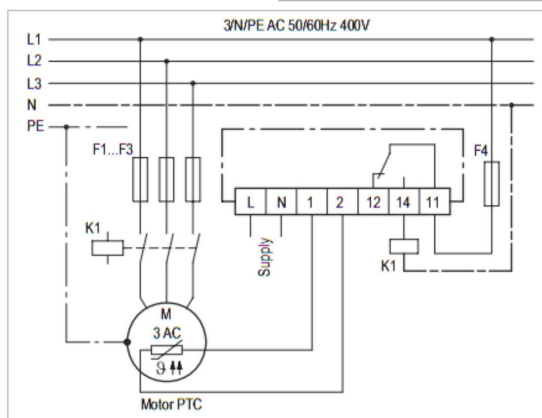


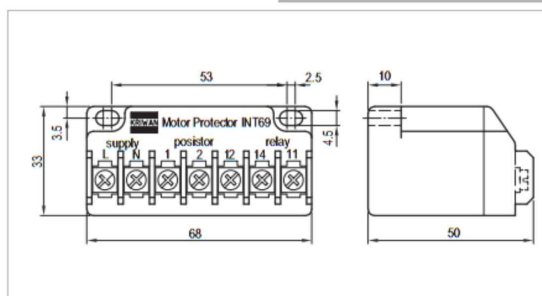
INT69 CN® Motor protector



INT69 CN



Wiring diagram



Dimensions in mm

Application

The motor protector based on PTC sensors provides one of the most effective and reliable protective measures against thermal overload of electrical machines. The protection device is composed of the INT69 motor protector and the PTC sensors. Due to its compact construction, the INT69 is suitable for installation in electrical equipment or in the terminal boxes of electrical machines.

Functional description

At the measuring circuit input of the INT69, it is possible to connect up to nine DIN 44081/082-conform PTC sensors, including those with differing nominal response temperatures. Thus it is possible to monitor several measuring points with only one INT69 motor protector.

If the temperature in one of the monitored parts or sections reaches the nominal response temperature of the respective PTC sensor, the sensor becomes highly resistive and the motor protector switches off. The device switches itself on again after cooling back down.

The relay's switching output is a potential-free changeover contact. This circuit works in accordance with the close circuit principle, i.e. even in the event of a sensor or cable break, the relay returns to its rest position and switches off.

The sensor, relay and supply current circuits are galvanically isolated from each other.

⚠ The mounting, maintenance and operation are to be carried out by an electrician. The valid European and national standards for connecting electrical equipment and cooling installations have to be observed. Connected sensors and connection lines that extend from the terminal box have to feature at least a basic insulation.

Technical specifications

Supply voltage	AC 50/60Hz 230V $\pm 10\%$ 3VA
Permitted ambient temperature	-30...+70°C
Measuring circuit	
- Type	PTC, accord. to DIN 44081/082
- Number of sensors	1-9 in series
- $R_{25, total}$	$< 1.8k\Omega$
- R_{rip}	$4.50k\Omega \pm 20\%$
- R_{reset}	$2.75k\Omega \pm 20\%$
- max. length connection line	$< 30m$
Output relay	Max. AC 240V 2.5A C300 Min. AC/DC 24V 20mA
Mechanical service life	Approx. 10.000 switching cycles
Protection class acc. to EN 60529	IP00
Connection type	Screw type terminal
Housing material	PA glass-fibre-reinforced
Mounting	Screw mounted
Dimensions	Refer to dimensions in mm
Weight	Approx. 150g
Check base	EN 61000-6-2, EN 61000-6-3 EN 61010-1 Overvoltage category II Pollution level 2

Order data

INT69 CN	52 A 460 S21
----------	--------------